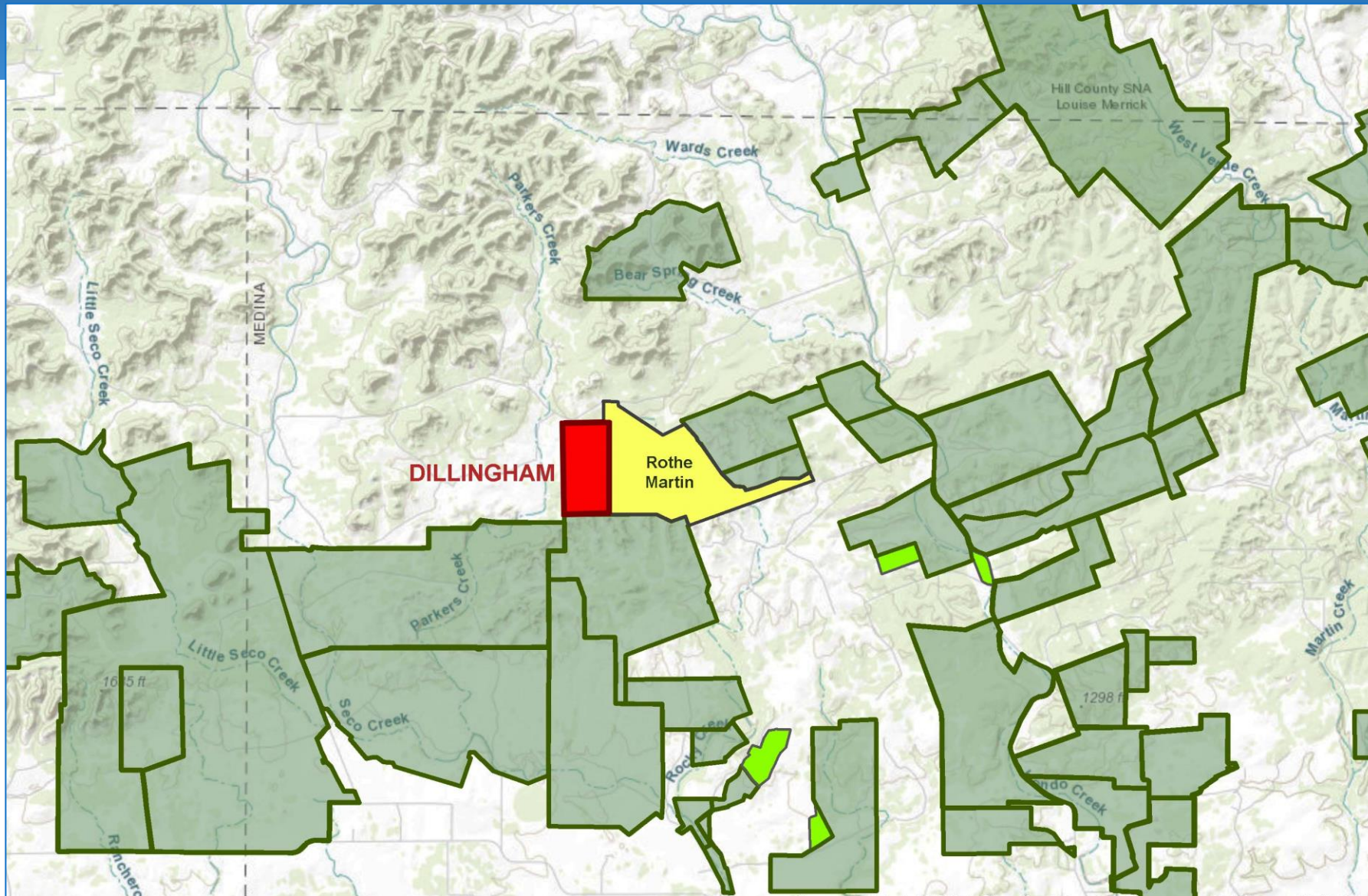


The Nature Conservancy



Dillingham Ranch
Hampton Ranch
Swain Ranch
Pearce Ranch

Dillingham Ranch (687 Acres) Medina County

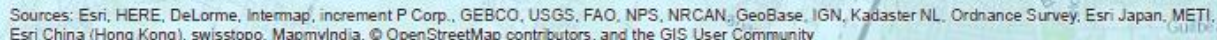


Dillingham Ranch (690 Acres) Medina County

- 687 acres (with adjacent 35 acre carveout) owned by Naylene Dillingham
- Adjacent to Domino Ranch
- Seco Creek watershed
- Top 60% in SET model
- GA reports high to very high water quantity and high water quality benefits
- Environmental reports and survey completed
- **Requesting Final Approval**



Bexar County



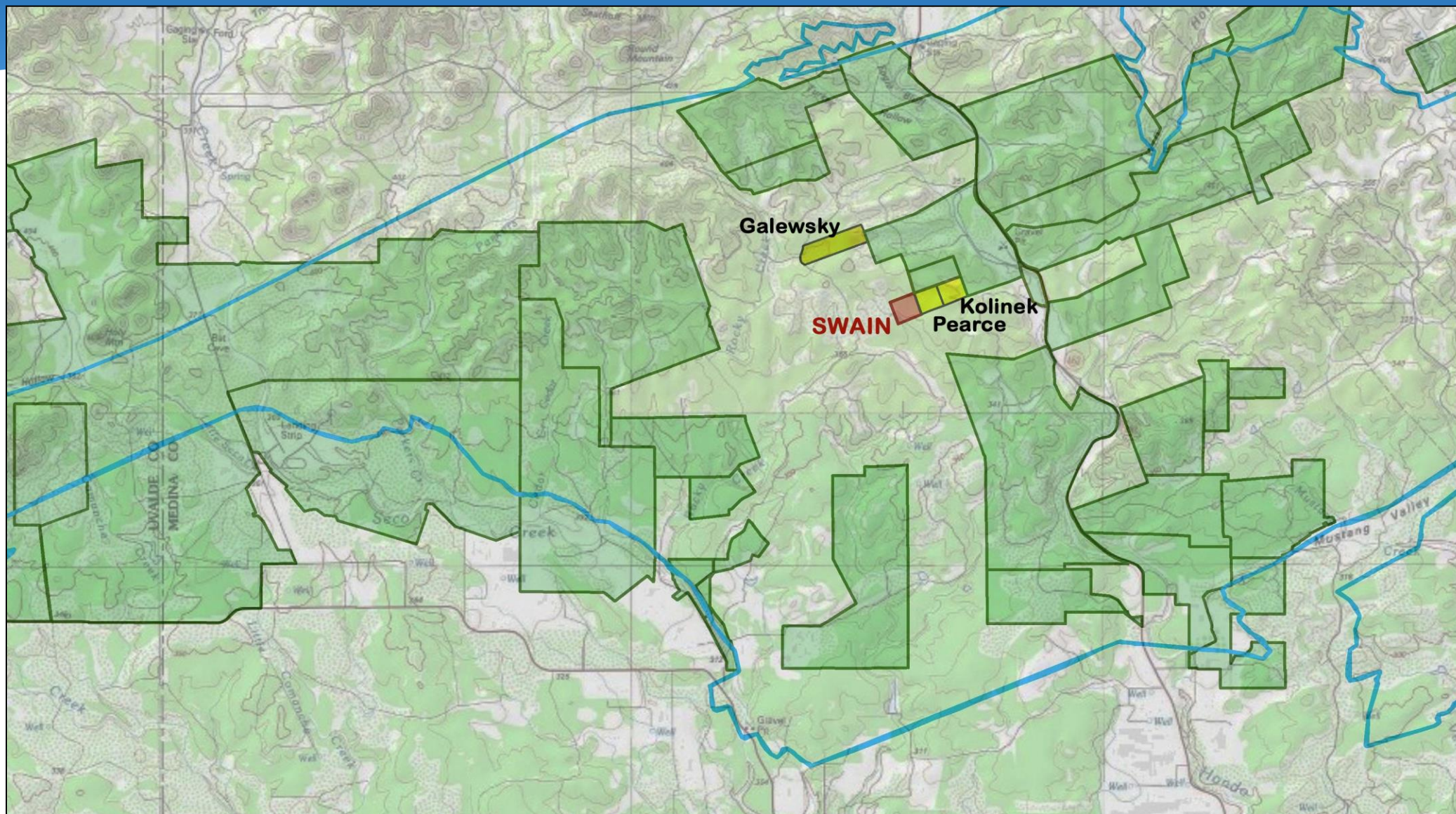
Highway 211/Hampton Property (~118 Acres) Bexar County

- 118 acres located in Recharge Zone
- 50% of SET Model
- Located across and adjacent to TPWD/Government Canyon State Natural Area properties acquired under Prop 3
- Owner seeking fee simple sale only; 8 acre carve out on southern edge of property
- TPWD will commit funding match toward acquisition
- Appraisal completed; Geological Assessment reports high water quality and high water quantity benefits
- **Requesting Stage 2 consideration**





Swain (57.469 Acres) Medina County

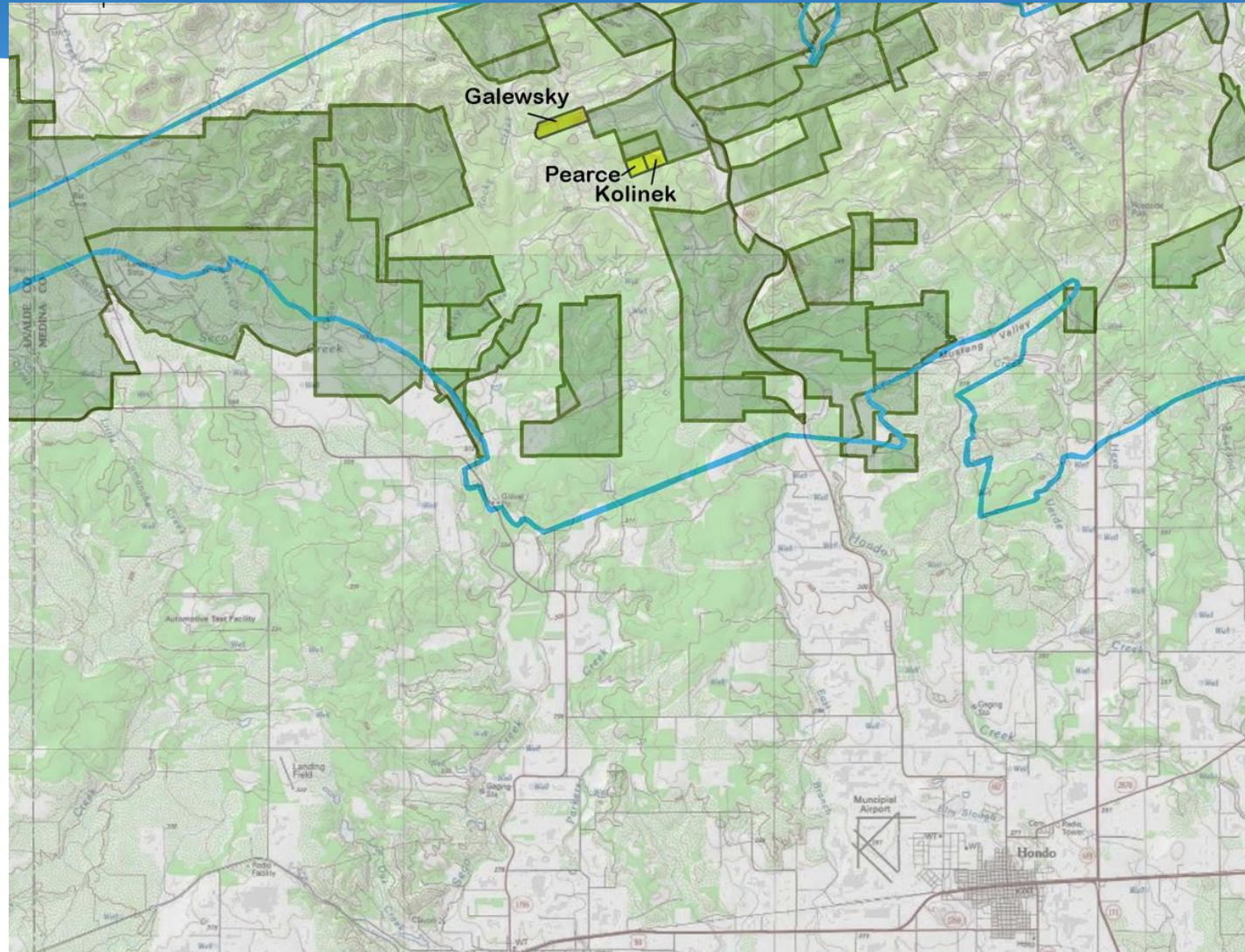


Swain (57.469 Acres) Medina County

- 57 acres located in Recharge Zone
- Top 30% of SET Model
- Located adjacent to Pearce Ranch
- Appraisal completed; Geological Assessment reports high water quantity and very high water quality benefits
- **Requesting Stage 2 consideration**



Pearce Ranch (56.926 Acres) Medina County



Pearce Ranch (56.926 Acres) Medina County

- One of several parcels adjoining Jagge-Foley Ranch east of Domino Ranch
- EAA Geological Assessment reports high water quality and quantity benefits
- Surveys and Environmental reports completed
- Seeking 1% maximum increased impervious cover limit
- **Requesting Final Approval**

